

Nami 1

COMPOSITION 50% linen 50% cotton

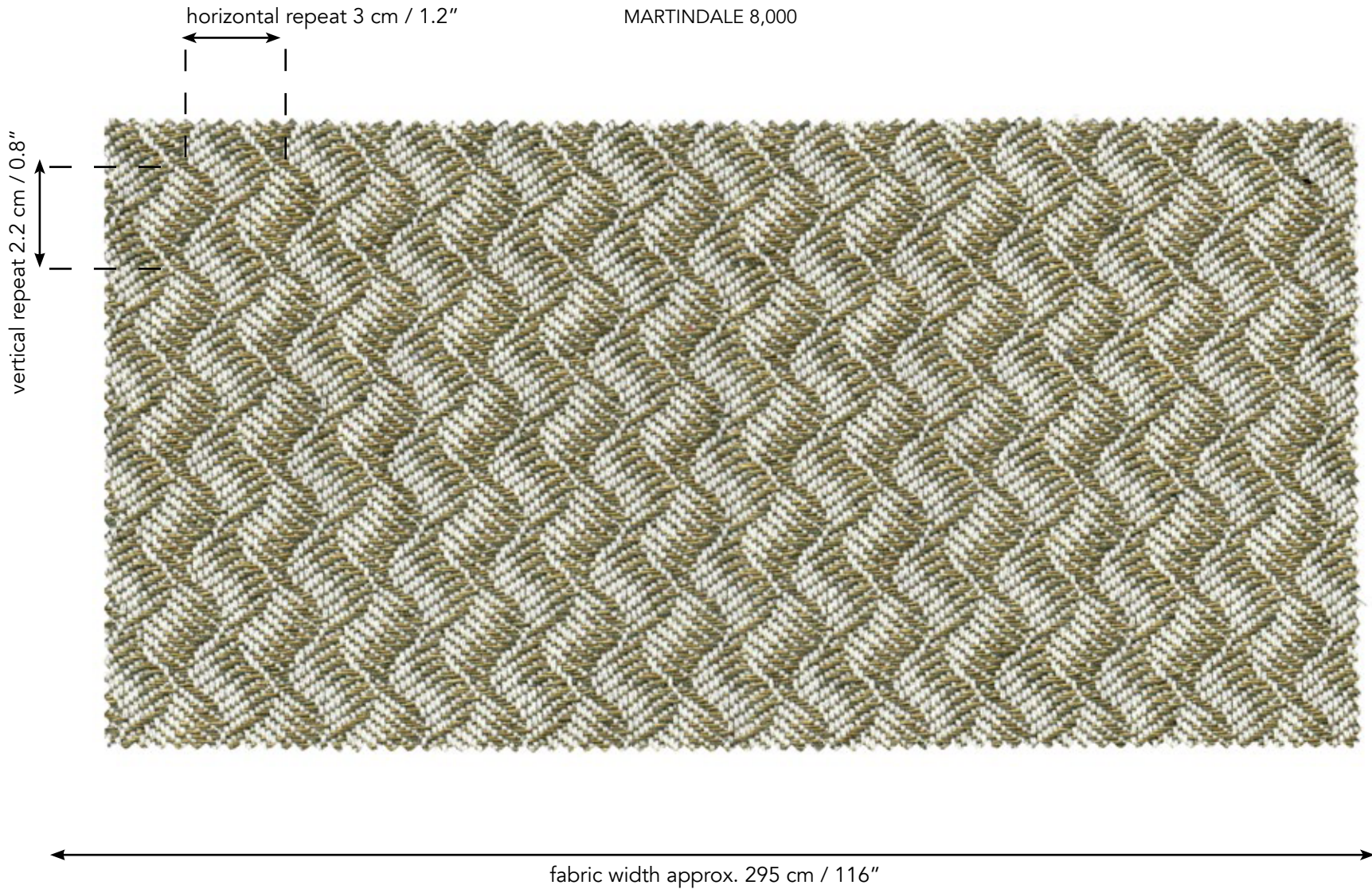
CARE dry cleaning

WIDTH approx. 295 cm / 116"

SOLD BY meter / yard

REPEAT 2.2 x 3 cm / 0.8" x 1.2"

MARTINDALE 8,000



fabric width approx. 295 cm / 116"

direction of pattern