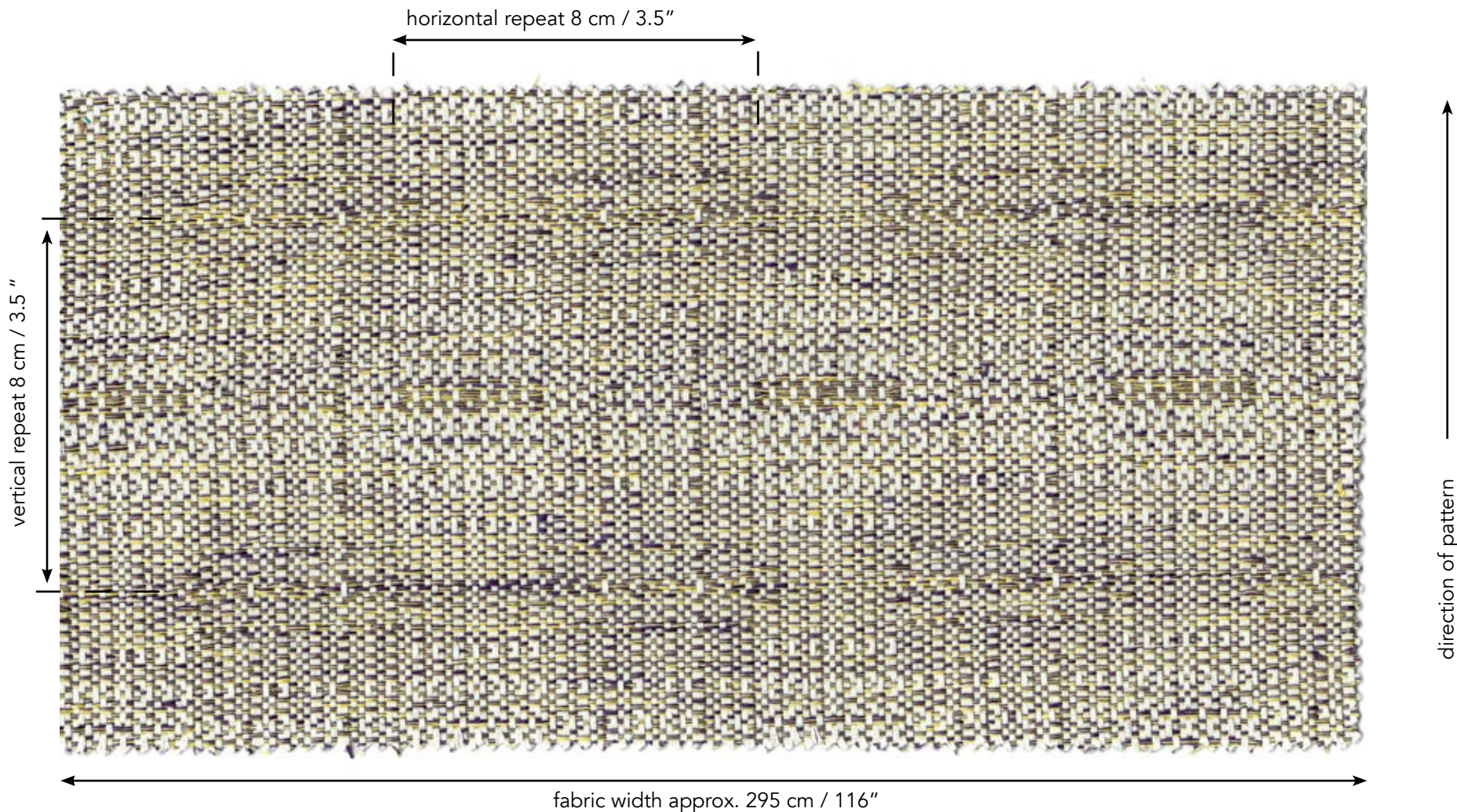


Kiri

COMPOSITION 50% linen 50% cotton, CARE dry cleaning
25% linen, 25% wool, 50% cotton SOLD BY meter / yard
WIDTH approx. 295 cm / 116"
REPEAT 8 x 8 cm / 3.5" x 3.5"
MARTINDALE 7,000



vertical repeat 8 cm / 3.5 "

horizontal repeat 8 cm / 3.5"

fabric width approx. 295 cm / 116"

direction of pattern